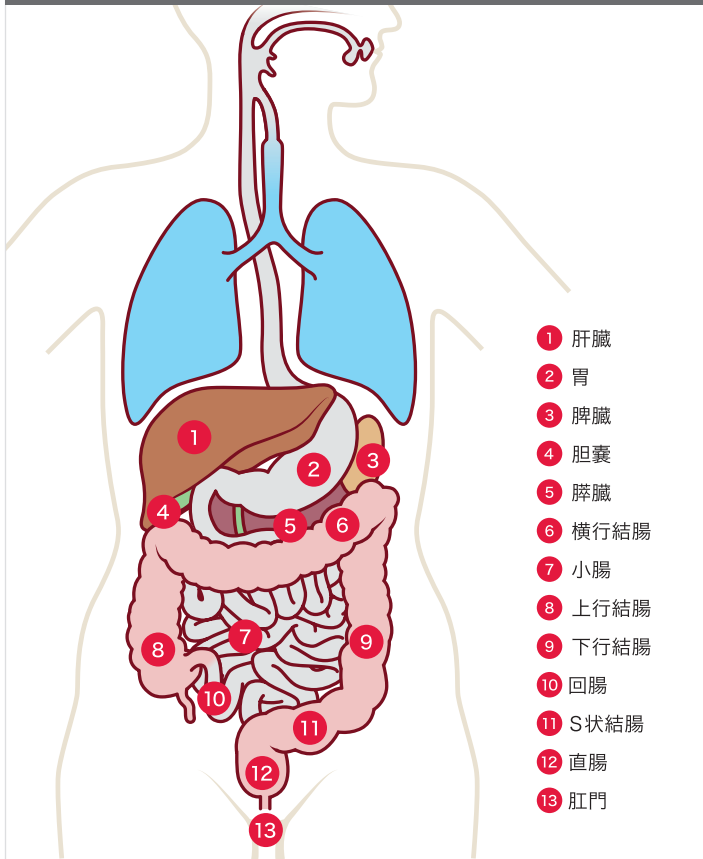


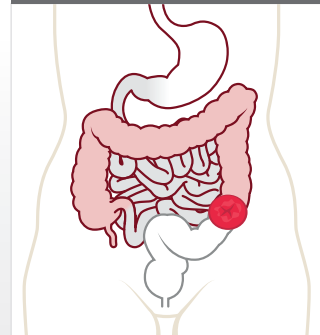
# 患者の解剖学ガイド

コロストミー造設術の例

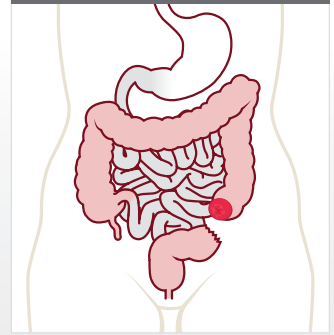


コロストミー造設術の例

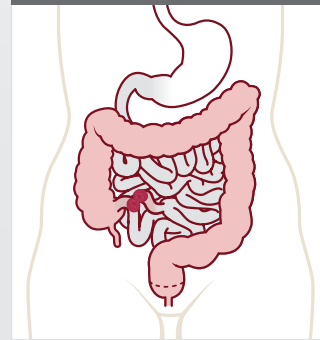
人工肛門造設術



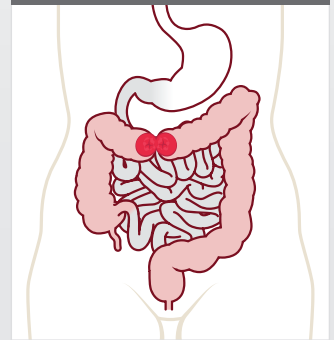
ハルトマン術



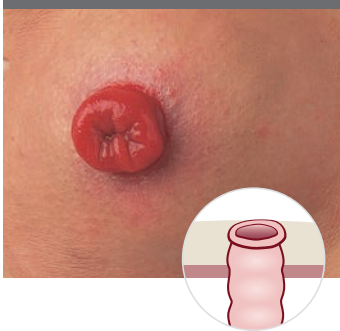
前方切除術



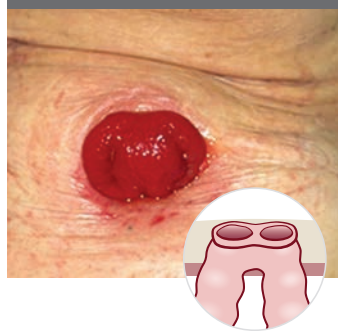
横行結腸切除術



単孔式ストーマ

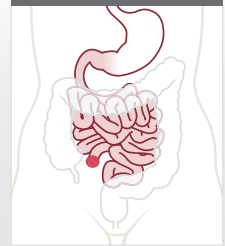


ループ式ストーマ

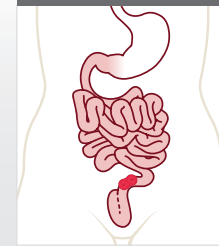


イレオストミー造設術の例

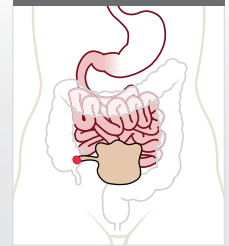
回腸ストーマ造設術



ループ式回腸ストーマ造設術



内蔵型パウチ



Notes

---



---



---



---



---



---

